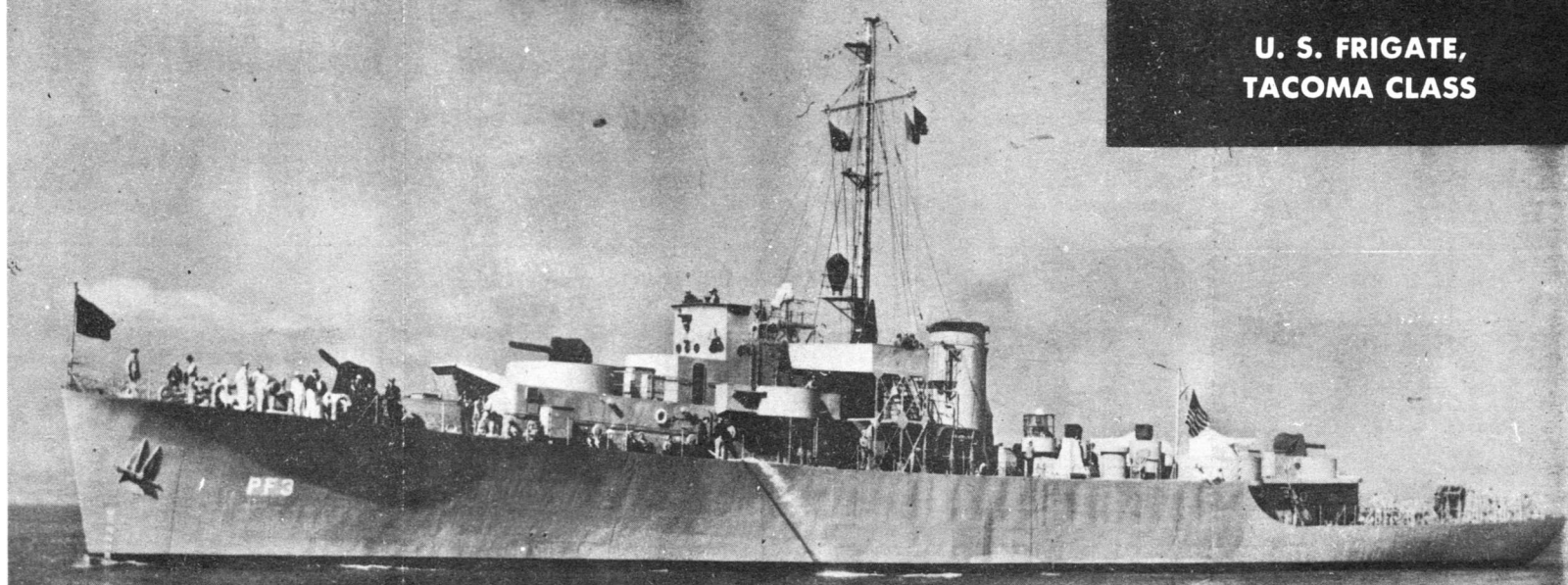


# U. S. FRIGATE, TACOMA CLASS



Official U. S. Navy Photograph

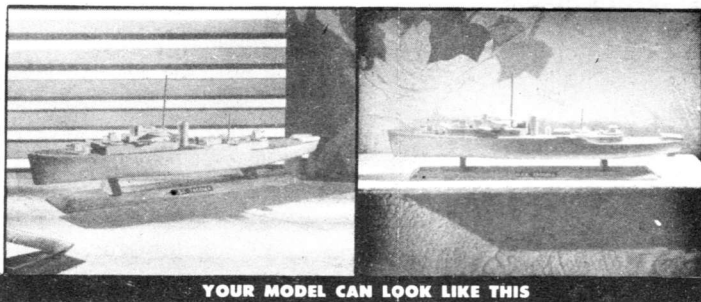
The American frigates, the USS Tacoma being the first in the Tacoma class, proved most useful in all theatres of World War II. Having to perform the many duties which fall to the lot of the modern cruiser, the principal task was to protect convoys against attack from all vessels. The American Navy found it necessary to build many of these ocean-going anti-submarine escort craft, to augment the destroyer escort program, as they could be built more rapidly. Frigates of the Tacoma class mounted three 3-inch dual purpose guns, smaller anti-aircraft weapons and carried depth charges and other anti-submarine devices. In addition to protecting convoys, they patrolled areas against submarine attack, acted as weather vessels and served as picket ships in anti-aircraft screens. The United States Coast Guard manned most of these vessels, and fought and sailed them in the best tradition of both Navy and Coast Guard.

## PART NUMBERS AND DESCRIPTION

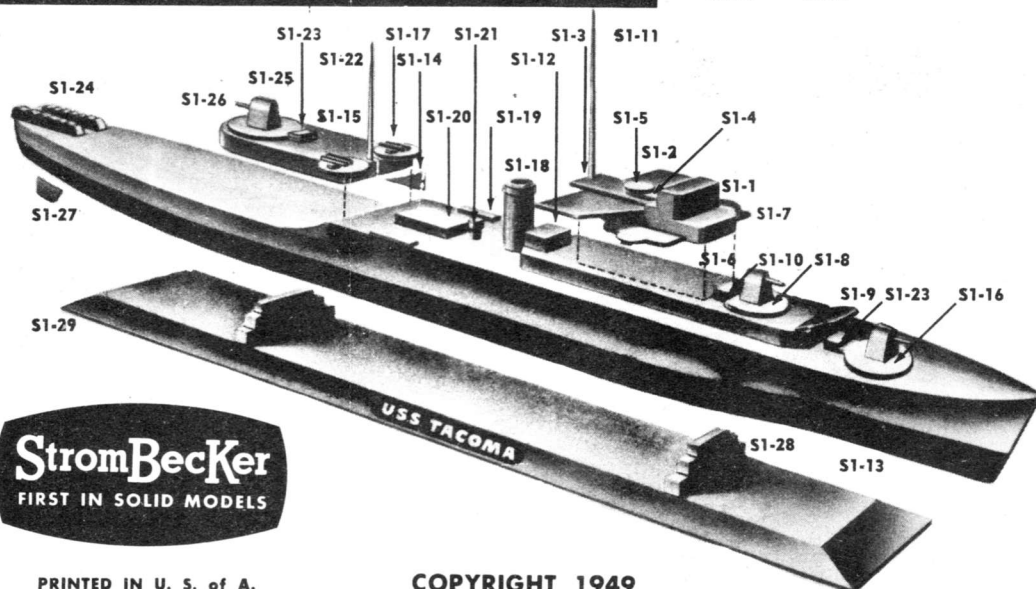
S1-1	BRIDGE
S1-2	BRIDGE WINGS
S1-3	PLATFORM
S1-4	UPPER BRIDGE STRUCTURE
S1-5	CONTROL STATION
S1-6	FORWARD DECK HOUSE
S1-7	DECK WINGS
S1-8	No. 2 3" GUN TUB
S1-9	BLAST SCREEN
S1-10	READY AMMUNITION BOX
S1-11	FOREMAST
S1-12	RADIO SHACK
S1-13	HULL
S1-14	TWO BULWARKS
S1-15	AFTER DECK HOUSE
S1-16	TWO No. 1 AND No. 3 3" GUN TUBS
S1-17	TWO 40 MM GUN TUBS
S1-18	SMOKE STACK
S1-19	TWO DECK STRUCTURES
S1-20	DECK STRUCTURE
S1-21	DECK STRUCTURE
S1-22	REAR MAST
S1-23	TWO READY AMMUNITION BOXES
S1-24	TWO DEPTH CHARGE RACKS
S1-25	THREE GUN MOUNTS
S1-26	THREE 50 CALIBER DUAL PURPOSE GUNS
S1-27	RUDDER
S1-28	TWO CRADLES
S1-29	BASE

## SISTER SHIPS: U.S.S.

ABILENE	ALBUQUERQUE
ALLENTOWN	ANNAPOLIS
ALEXANDRIA	BAYONNE
BEAUFORT	BURLINGTON
BELFAST	BROWNSVILLE
BRUNSWICK	CHARLOTTE
BANGOR	BATH
BISBEE	CASPER
CARSON CITY	CASPER
CHARLOTTESVILLE	
CORONADO	COVINGTON
CORPUS CHRISTI	HURON
DAVENPORT	DEARBORN
EL PASO	EVANSVILLE
EMPORIA	GRAND FORKS
EUGENE	GRAND ISLAND
EVERETT	GLOUCESTER
FORSYTH	GREENSBORO
GALLUP	GRAND RAPIDS
GLADWYNE	KNOXVILLE
GLENDALE	MANITOWOC
GROTON	HUTCHINGSON
GULFPORT	LONG BEACH
HINGHAM	NEW BEDFORD
HOQUIAM	LORAIN
OGDEN	KEY WEST
POCATELLO	MACHIAS
SHREVEPORT	MILLEDGEVILLE
PASCC	MOBERLY
WOONSOCKET	MUSKEGON
SAUSALITC	MUSKOGEE
SHEBOYGAN	NEWPORT
SAN PEDRC	ORANGE
POUGHKEEPSIE	ORLANDO
UNIONTOWN	PEORIA
RACINE	READING
VAN BUREN	ROCKFORD
SANDUSKY	TACOMA



YOUR MODEL CAN LOOK LIKE THIS



**StromBecker**  
FIRST IN SOLID MODELS

PRINTED IN U. S. of A.

COPYRIGHT 1949

USE THIS SIDE AS A WALL POSTER

## A WHAT TO DO FIRST

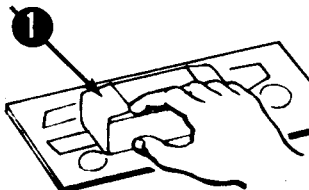
Check the parts with parts list and exploded view illustrations as a guide. If any are missing or damaged, fill out coupon for replacements. Read all instructions to get the "feel" of the job. Try fitting the parts together temporarily to see what sanding

must be done and what you must glue. No carving tools are needed. Prepare glue mixture from the envelope provided, following instructions on the package. Mix in a jar cover. Don't add too much water.

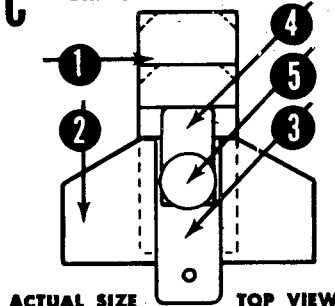


## B VENEER SHEET

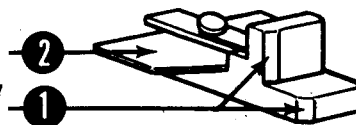
1. Sand top and bottom surfaces smooth with fine sandpaper.
2. Take sheet in both hands with cut side up and bend toward you, carefully separating each piece.
3. Sand edges of all pieces smooth.



## C BRIDGE ASSEMBLY

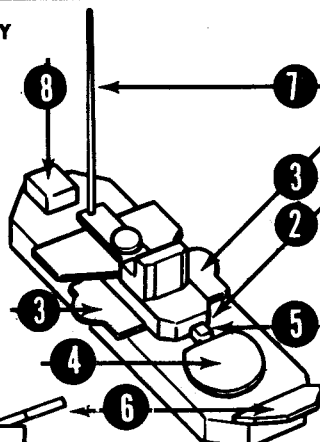


1. Bevel front corners of bridge (S1-1). Sand sides smooth.
2. Glue bridge wings (S1-2) to bridge.
3. Glue platform (S1-3) to bridge wings.
4. Glue upper bridge structure (S1-4) to bridge and platform.
5. Glue control station (S1-5) to bridge structure.



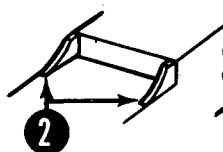
## D BRIDGE TO DECK HOUSE ASSEMBLY

1. Sand forward deck house (S1-6).
2. Glue bridge assembly to deck house, 1" from front of deck house.
3. Glue deck wings (S1-7) to deck house.
4. Glue No. 2 3" gun tub (S1-8), this is a little smaller than the two S1-16 tubs, in place in front of bridge.
5. Glue ready ammunition box (S1-10) to gun tub.
6. Bevel edge of blast screen (S1-9) and glue to deck in position shown.
7. Cut foremast (S1-11) 2-1/8" long, from dowel, and sand taper. Insert mast through hole in platform and secure to deck house with a spot of glue.
8. Sand radio shack (S1-12) and glue to deck house.



ACTUAL SIZE

## E TO PREPARE HULL



1. Fair lines of hull (S1-13) by rounding over sharp corners marked "X".
2. Glue bulwarks (S1-14) to hull even with sides.
3. Sand entire hull smooth with fine sandpaper.



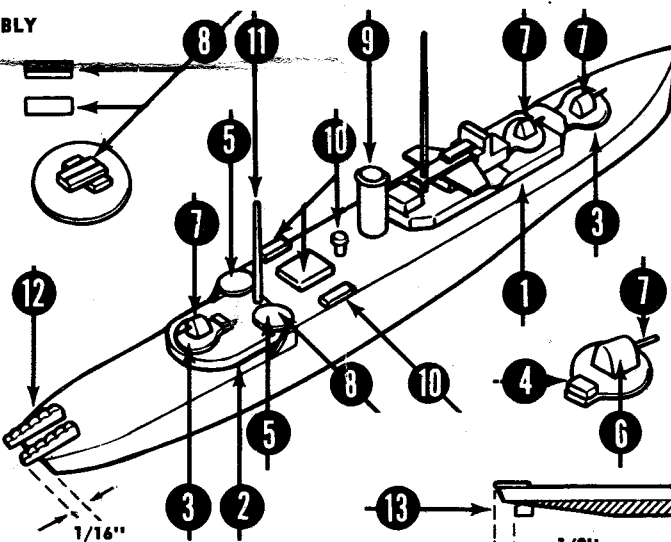
## F SUPERSTRUCTURE TO HULL ASSEMBLY

### DECK HOUSES

1. Glue forward deck house unit to hull, front edge 2-1/8" from bow.
2. Sand after deck house (S1-15) and glue to hull.

### GUNS

3. Glue No. 1 3" gun tub (S1-16) to hull at fore deck, 1/16" from forward deck house. Glue No. 3 3" gun tub to after deck house.
4. Glue ready ammunition boxes (S1-23) to No. 1 and No. 3 gun tubs.
5. Glue 40 mm gun tubs (S1-17) to deck at bulwarks.
6. Sand ends and round corners of covered gun mounts (S1-25).
7. Assemble 3" 50 caliber dual purpose guns (S1-26) to mounts. Glue mounts to center of gun tubs.
8. Make 40 mm guns from scrap veneer (See sketch). Glue in place.



### OTHER DETAIL PARTS

9. Glue stack (S1-18) to deck 1/16" from deck house.
10. Glue deck structures (S1-19, 20, 21) in place.
11. Cut rear mast (S1-22) 1-1/8" long from dowel. Sand taper and glue in place in between notch in rear deck house.
12. Break apart depth charge racks (S1-24). Pieces on ends are scrap. Sand ends and sides and glue in place overhanging stern 1/16".
13. Glue rudder (S1-27) to bottom 1/8" from end.



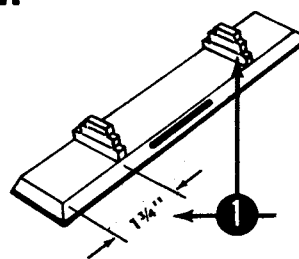
## G PAINTING YOUR MODEL

You may finish your model in natural finish. However, it will look more realistic if finished in battleship gray above waterline and deep red or black below waterline.

The grain of the wood or nicks should not show in the finished model. Be sure the surfaces are sanded smooth. Remove all dust, then apply a "sanding sealer" to fill the pores. Then shellac or clear dope should be applied in several coats, sanding between each coat for a smooth surface.

Your hobby dealer can supply you with the proper color of paint. Apply several coats of gray over the entire model, sanding lightly with very fine sandpaper between coats. When thoroughly dry, mark location of waterline 11/32" from bottom. Lay a piece of masking or scotch tape across these points and paint the bottom part with one coat of red or black.

## H DISPLAY STAND



1. Sand base (S3-27) smooth. Score lines with knife or hard lead pencil on sides of cradles (S3-26) to represent timbers, then glue to base about 1-3/4" from ends. To finish the stand, a nice effect is obtained by applying a coat of light stain only (walnut or oak) giving it a rustic appearance. Otherwise, you may paint it in a color to suit your own taste.
2. Secure model to stand with cement, or bore small holes through base and cradle and fasten with very small screws.

### EXTRA DETAIL

Small detail parts such as anchors, chains, capstans, railings, life boats, crows nest, pennants, etc., are not furnished with kit but can be made or purchased to add more realism to your model.

All sets are carefully packed. If a part was missing or damaged, fill out coupon and we will replace it free of charge.

I certify the following part was missing ( ) damaged ( ) (Check which).

Part Number \_\_\_\_\_ Model No. C17

My Name is \_\_\_\_\_

House No. or Box \_\_\_\_\_

City \_\_\_\_\_, Zone \_\_\_\_\_, State \_\_\_\_\_

Paste this slip on back of 1c postal card. Address card to: MP DEPT.