

SIMPLE ASSEMBLY INSTRUCTIONS FOR LOCKHEED 14 TRANSPORT NO. C9

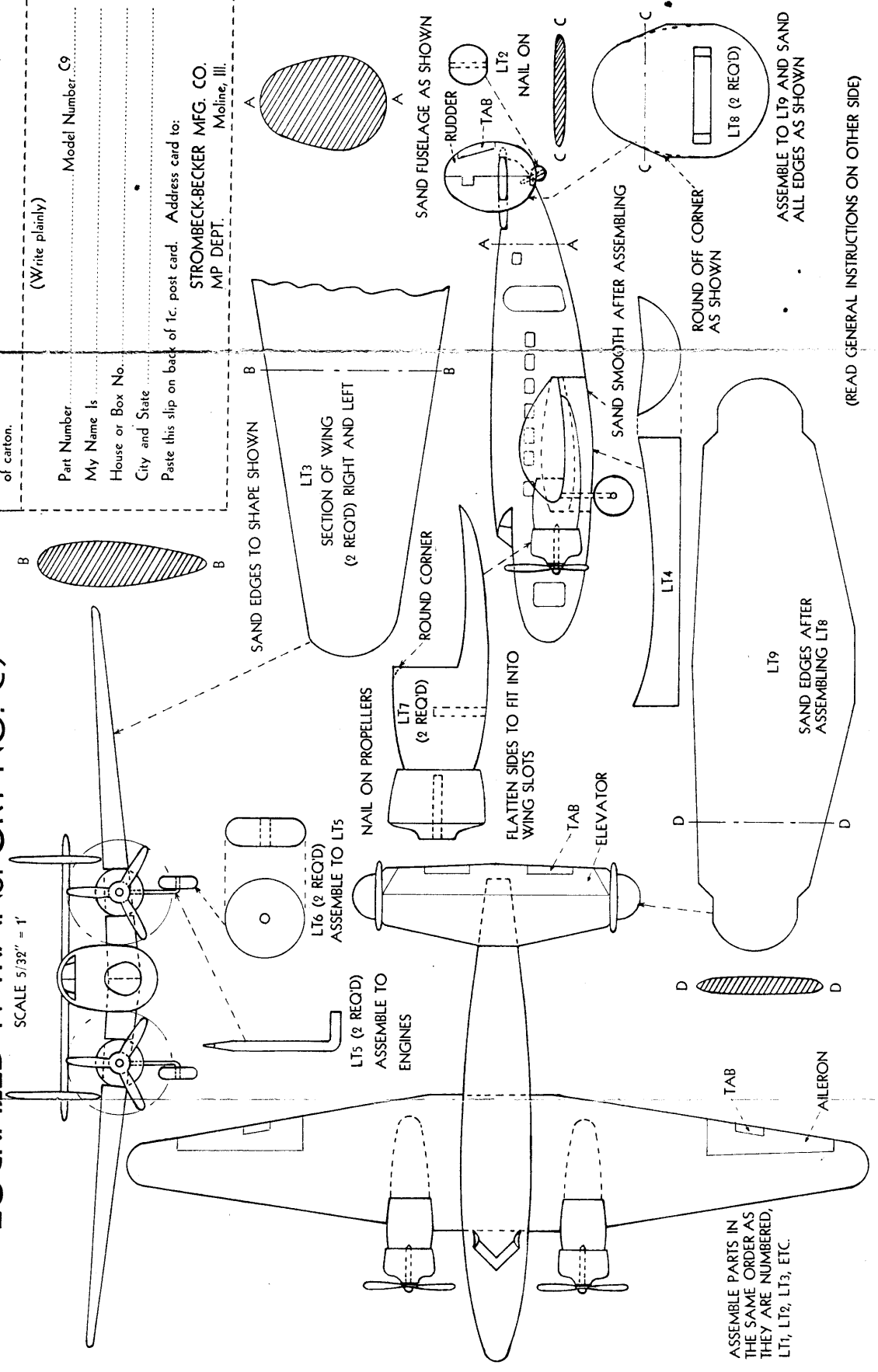
SCALE 5/32" = 1'

All sets are carefully packed, but if you find a shortage or defective part, fill out this slip and we will send it without cost.
Part numbers will be found on drawings. Model number is on flap at end of carton.

(Write plainly)

Part Number Model Number C9
 My Name Is
 House or Box No.
 City and State

Paste this slip on back of 1c. post card. Address card to:
STROMBECK-BECKER MFG. CO.
 MP DEPT.
 Moline, Ill.



SAND EDGES TO SHAPE SHOWN

SECTION OF WING
(2 REQ'D) RIGHT AND LEFT

ROUND CORNER

ROUND OFF CORNER
AS SHOWN

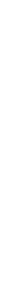
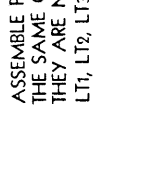
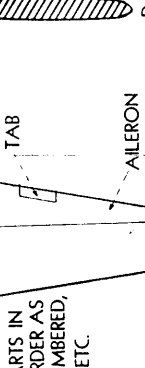
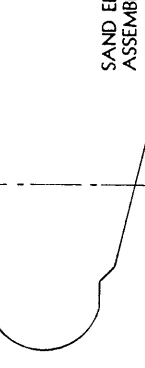
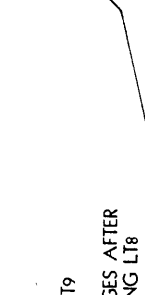
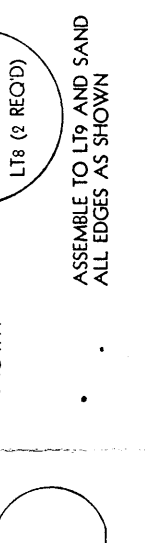
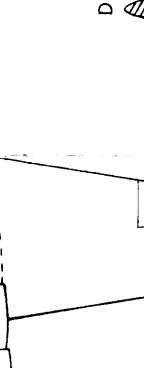
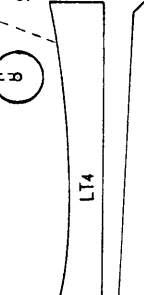
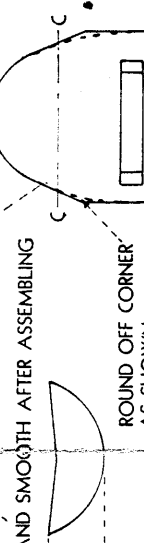
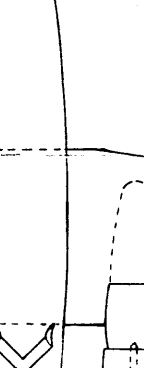
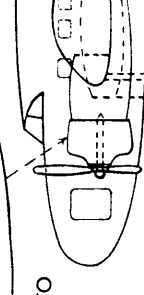
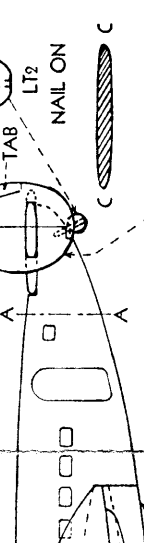
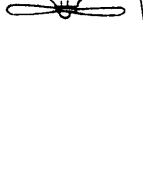
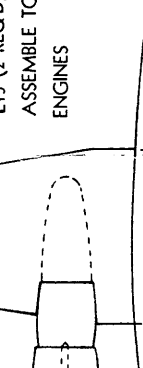
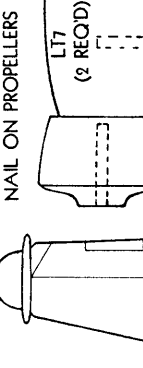
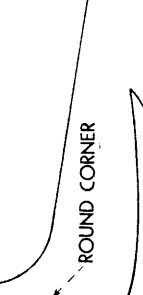
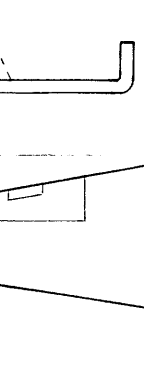
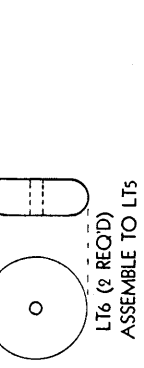
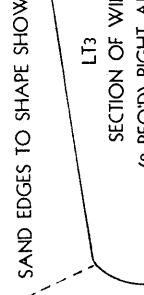
SAND FUSELAGE AS SHOWN

SAND SMOOTH AFTER ASSEMBLING

ASSEMBLE PARTS IN THE SAME ORDER AS THEY ARE NUMBERED, LT1, LT2, LT3, ETC.

ASSEMBLY TO LT9 AND SAND ALL EDGES AS SHOWN

(READ GENERAL INSTRUCTIONS ON OTHER SIDE)



GENERAL INSTRUCTIONS FOR ASSEMBLING LOCKHEED 14 TRANSPORT NO. C9

This kit contains all parts for making an authentic scale model 5/32"—1'. Compare all parts with those shown in full size on drawing before starting to assemble.

Follow the instructions carefully and you will have a better finished model.

GLUE

Mix only a small quantity of glue at a time. It is not necessary to use clamps when assembling StromBecKer Models.

SANDING

Glue the coarse sandpaper to one end of the 1/8" x 1" x 5" piece of wood so it can be used as a file. Use this in sanding parts to the right shape.

Before starting to assemble sand the fuselage all over and shape where necessary as shown on drawing.

Additional sanding will be necessary as you build up the model as shown on drawing. Be sure and sand off any excess glue. Where much sanding is required use the

coarse sandpaper first and always finish off with the fine sandpaper for a good smooth model.

FINISH

Many model makers prefer to finish their models in a natural wood finish using either shellac or clear lacquer. If you wish to paint your model in the regular color use aluminum paint.

For a good finish apply two coats of paint. Sand lightly with worn sandpaper between the first and second coat.

You can also show windows, doors, ailerons, etc., by drawing these with pen and ink. Use only India drawing ink as other inks may rub off. See drawing.

C10 AIRPLANE STAND

Give your models a more realistic appearance by mounting them on one of these stands. Consists of streamlined base, and rod with flexible tip as shown at right. You can buy these stands wherever StromBecKer Model Kits are sold and the price is 10c.

