

SIMPLE ASSEMBLY INSTRUCTIONS FOR 1937A SOUTHERN PACIFIC DAYLIGHT

Scale 5/32" = 1' 0"

Read instructions completely and compare all parts with the drawings before you start to assemble this model. You will be much more pleased with the finished result if you follow instructions in the order in which they are given. Mix only a small quantity of glue at a time. It is not necessary to use glue clamps when assembling StromBeckKer Models.

Put on deck pieces (1L13 and 1L14), oil cap (MT71) and water cap (MT73). Glue on rear wheel truck (1L15). Put hook in end of front wheel truck (1L16) and glue in place.

The locomotive and tender are black. **DO NOT** paint the shaded areas shown in Figs. 1, 1A, 1C and 2, nor the underside of wheel trucks, as glue will not stick to painted surfaces. Assemble wheels to axles

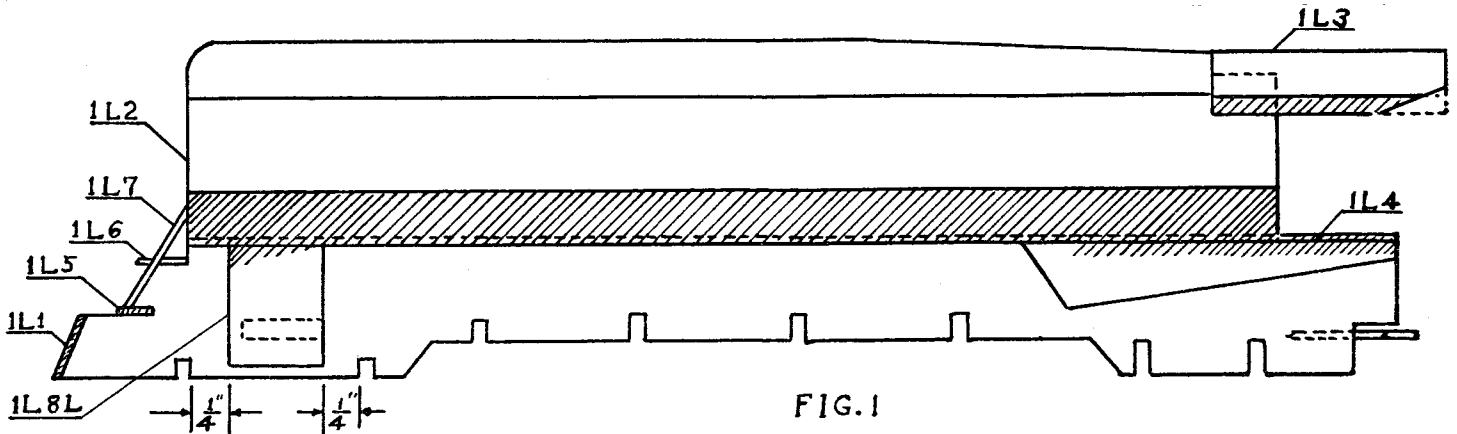


FIG. 1

ASSEMBLE LOCOMOTIVE: Sand the front end of the base (1L1) to about a 1 in. radius as shown in Fig. 1-C. Put eye coupler in rear end of base. See Fig. 1.

and paint black. If holes in wheels are small, enlarge from inside with an ice pick or awl. If holes are too large put in a little glue. Paint headlight (1L9) black except the side that is glued to boiler, and set aside to dry.

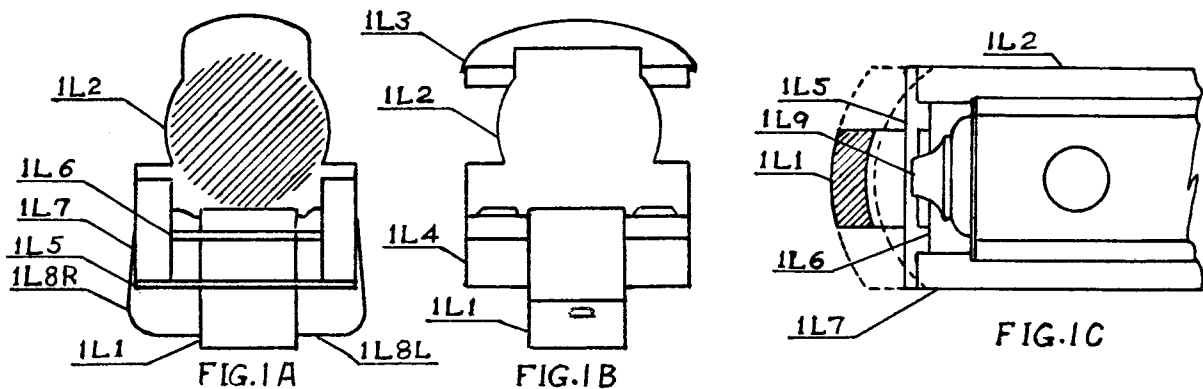


FIG. 1A

FIG. 1B

FIG. 1C

Glue boiler (1L2) to base so that joint at the front end is even. Sand underside of cab top (1L3) to shape as shown in Fig. 1. Glue in place. Next glue the two firebox sides (1L4) to the base. See Figs. 1 and 1B.

Cut out the cardboard apron for the front of the locomotive along the outside red line and inside up to color. Cut out round disk for boiler front. Cut out Over

Glue step support (1L5) and platform (1L6) in place being careful to center accurately. See Figs. 1 and 1A. Break apart scored steps (1L7) fit between step support and boiler and glue in place. Sand ends of cylinders (1L8L and 1L8R) and glue in place with holes facing rear of engine.

ASSEMBLE TENDER: Glue steps (1L10) flush with one end of bottom (1L11). Center carefully. Glue on the three blocks (1L12) as shown in Fig. 2.

All sets are carefully packed, but if you find a shortage or defective part, fill out this slip and we will send it without cost.

Part numbers will be found on drawings. Model number is on flap at end of carton.

(Write plainly)

Part Number.....Model Number 1937A

My name is.....

House or Box No.....

City and State.....

Paste this slip on back of 1c post card. Address card to:
STROMBECK-BECKER MFG. CO.
MP DEPT. Moline, Ill.

cardboards for engine and tender along the top and bottom red lines and up to the color in the ends.

Rod should move freely. Repeat for other side. Insert drive rods in cylinders and drop assembly into

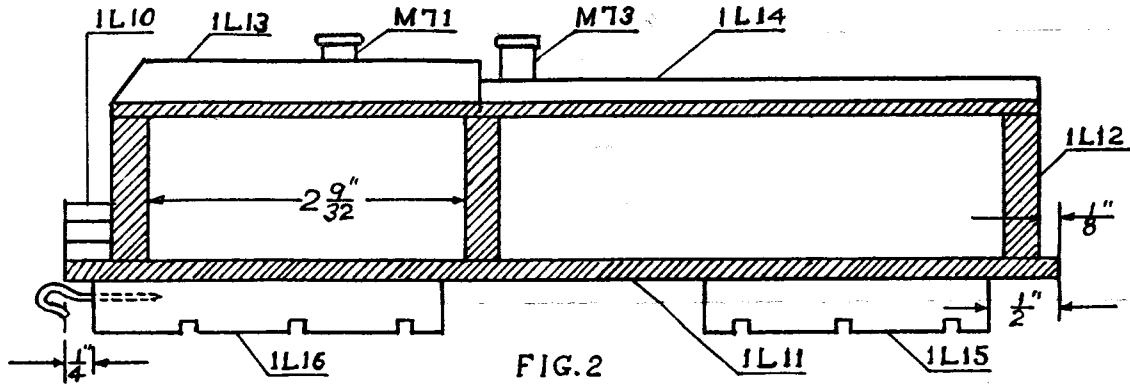


FIG. 2

Fit cardboard sides on locomotive, gauging from front edge of top of cab. The top of orange band should be flush with walk. Put a pencil mark at front edge and before gluing in place try front apron to get the proper fit. Apply glue to shaded areas (do not apply glue to cardboard) and put in place. Glue on round disk in front of boiler. Scrape off aluminum in center of disk and glue on headlight.

Apply glue to shaded areas on tender and assemble sides. Paint black according to instructions on different pieces.

Rivet main rod (No. 126) to side rod (No. 125). See Fig. 3. Do not rivet too tight as rods must move freely. Make a small hole with an ice pick in inner circle of two No. 36 drive wheels. Assemble side rod with two small nails which should be pressed in.

position. Put the other four drive wheels in place and secure with cardboards glued over axles. Assemble small (No. 38) leading wheels, medium (No. 33)

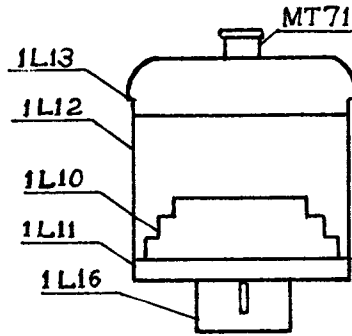


FIG. 2A

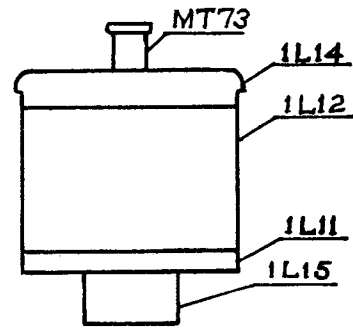


FIG. 2B

trailing wheels and small (No. 38) tender wheels and glue on cardboards.

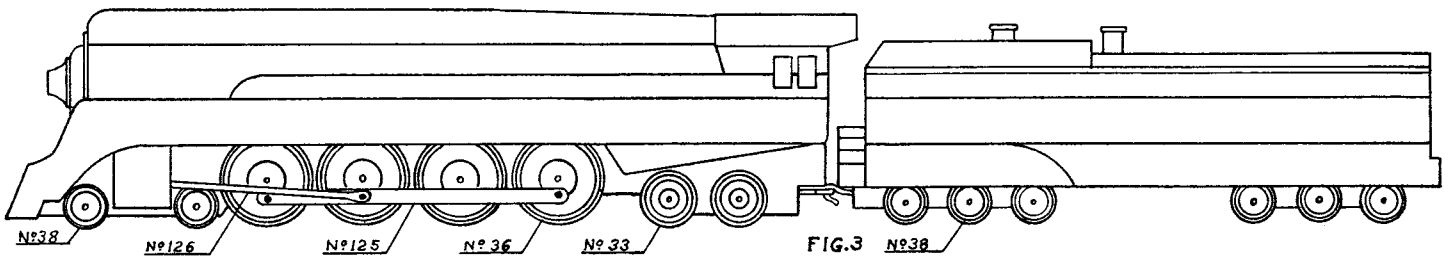


FIG. 3